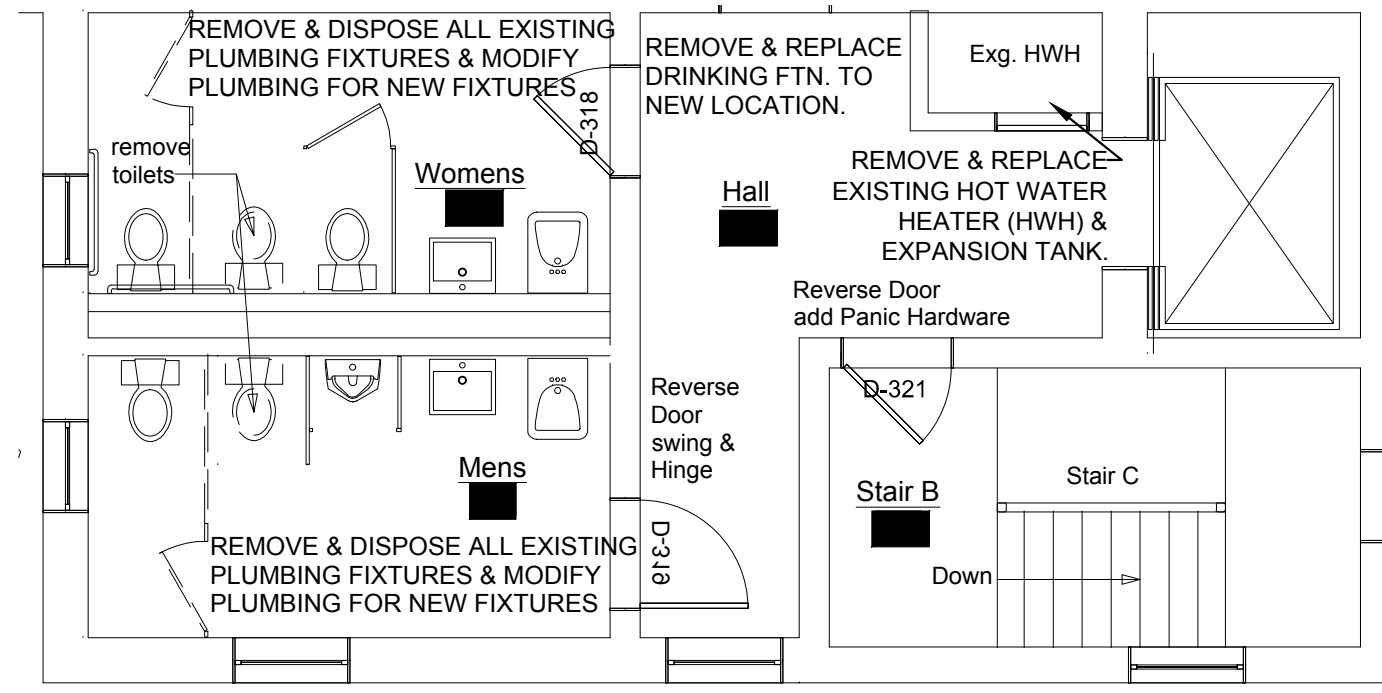
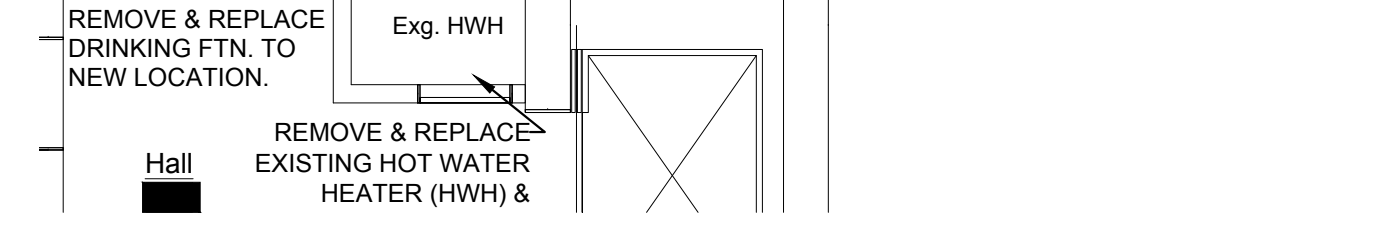
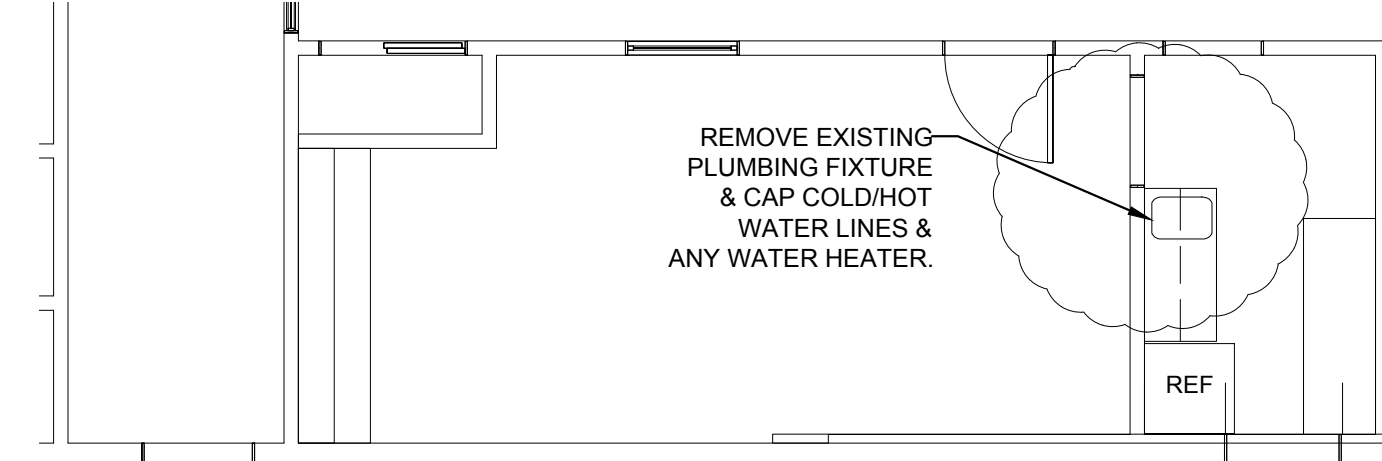
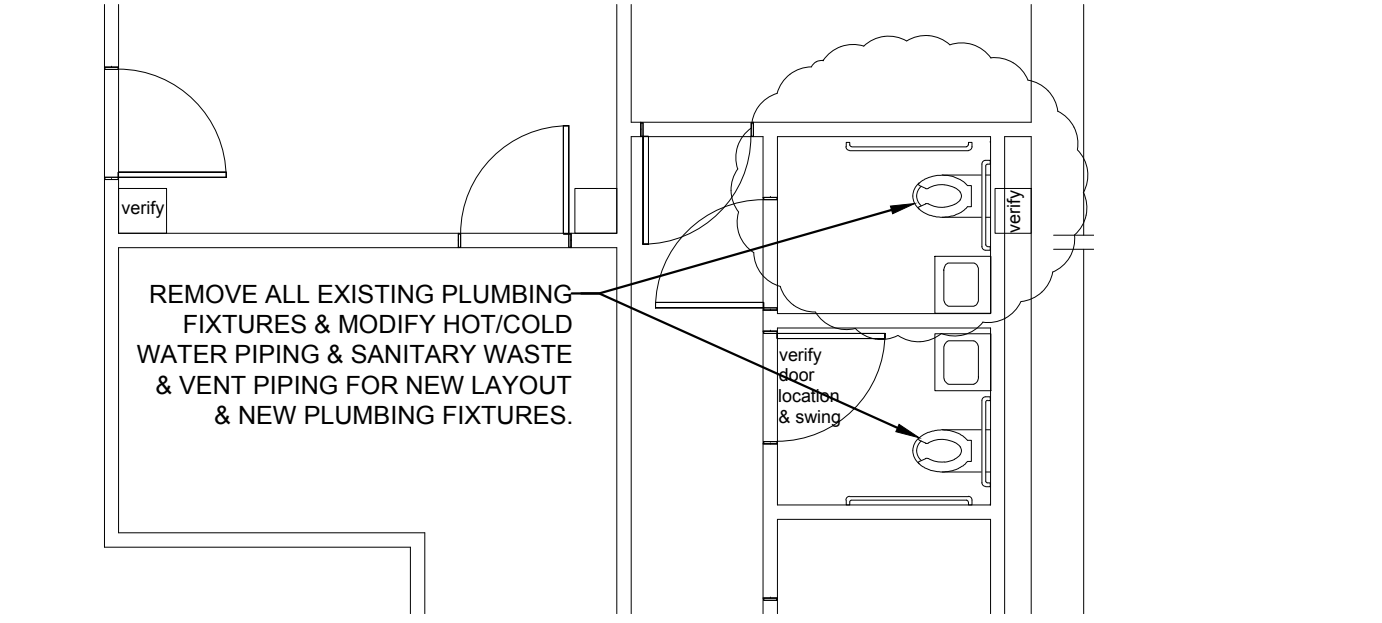


**FIRST FLOOR PLUMBING PLAN**  
SCALE: 3/16" = 1'-0"



**FIRST FLOOR DEMOLITION PLANS**  
SCALE: 3/16" = 1'-0"

**Keyed Notes:**

1 Remove Door and Trim and Infill Wall with steel studs sound deadening board and drywall to make flush.

REMOVE & DISPOSE OF ALL EXISTING PLUMBING FIXTURES IN 1ST FLOOR AND 2ND FLOOR PUBLIC BATHROOMS & REPLACE WITH NEW PLUMBING FIXTURES PER PLUMBING FIXTURE SCHEDULE. MODIFY PLUMBING HOT/COLD WATER, SANITARY DRAIN & VENT PIPING AS REQUIRED FOR NEW INSTALLATION. TYP.

CONTRACTOR SHALL FIELD VERIFY FINAL EXISTING CONDITIONS & ADJUST PLUMBING BASED ON ACTUAL CONDITIONS TYPICAL.

CONNECT 1 1/2" CW TO EXISTING  
PROVIDE A NEW 3/4" HOT WATER RECIRC. PUMP WITH PROGRAMMABLE TIMER & INSULATED LINE TO P-3 LAVATORIES & P-5 SINK. REMOVE & REPLACE EXISTING HWH & EXPANSION TANK W/ NEW RE-CIRCULATOR PUMP & PROGRAMMABLE TIMER CONTROL. COORDINATE WITH ELECTRICAL CONTRACTOR.

See new stair railing and guard modifications on sheet A6.1

Creamery Building Renovation  
21 Kent Street, Winchester, Virginia, 22601

City of Winchester

Architect  
**GROVE & DALL'OLIO**  
ARCHITECTS  
PLLC  
18 West Boscawen Street  
Winchester, VA 22601

Mech/Elect Engineer  
Comfort Design Inc.  
620 Pennsylvania Avenue  
Winchester, VA 22601  
(540) 665-2846

Structural Engineer  
PAINTER-LEWIS, P.L.C.  
817 Cedar Creek GRADE, Suite 120  
Winchester, Virginia 22601  
(540) 662-5792

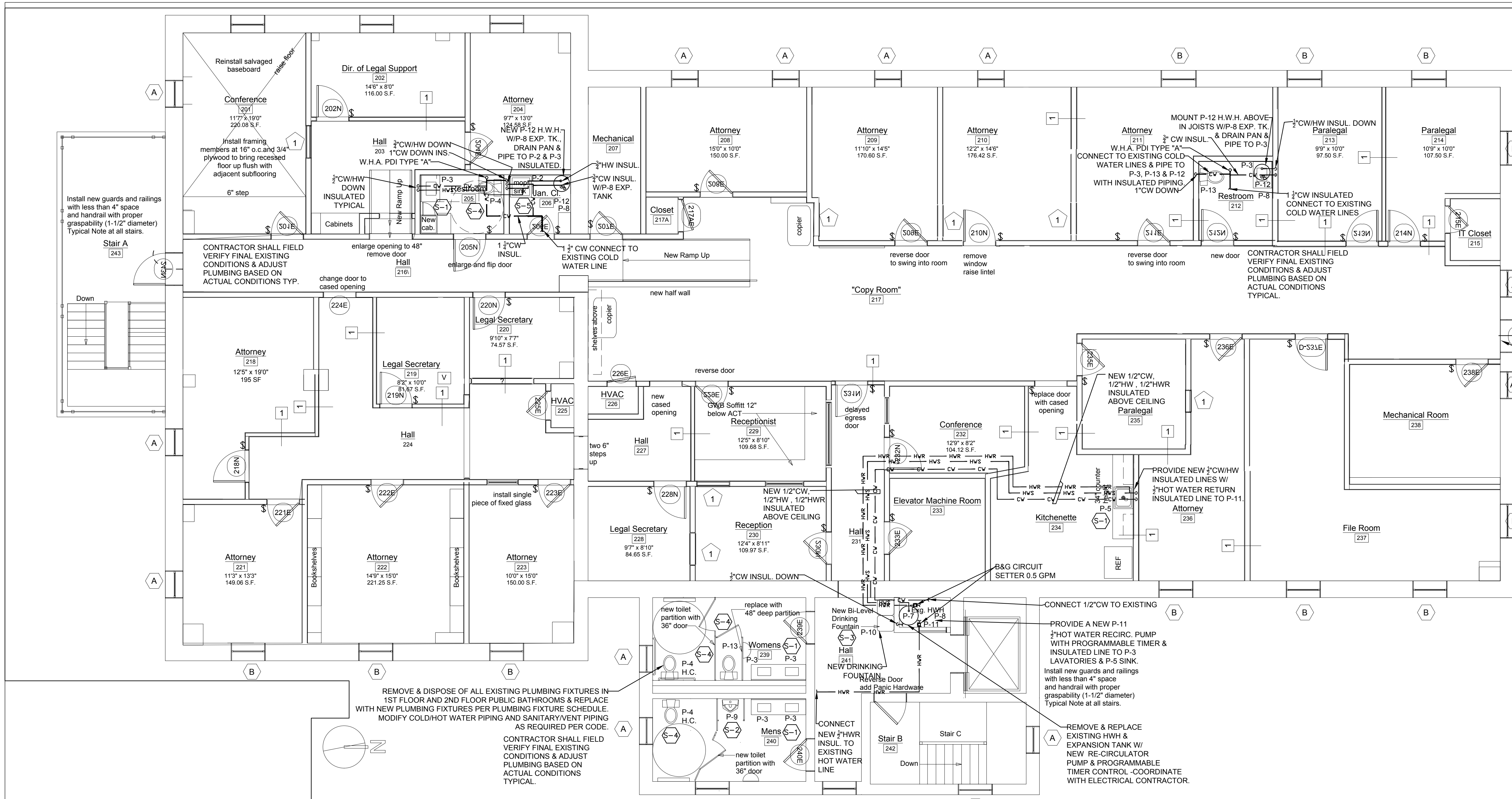
Drawing Title  
**PLUMBING  
1ST FLOOR  
PLAN**

Issue/Revision Seal

**BID SET  
NOT FOR  
CONSTRUCTION**

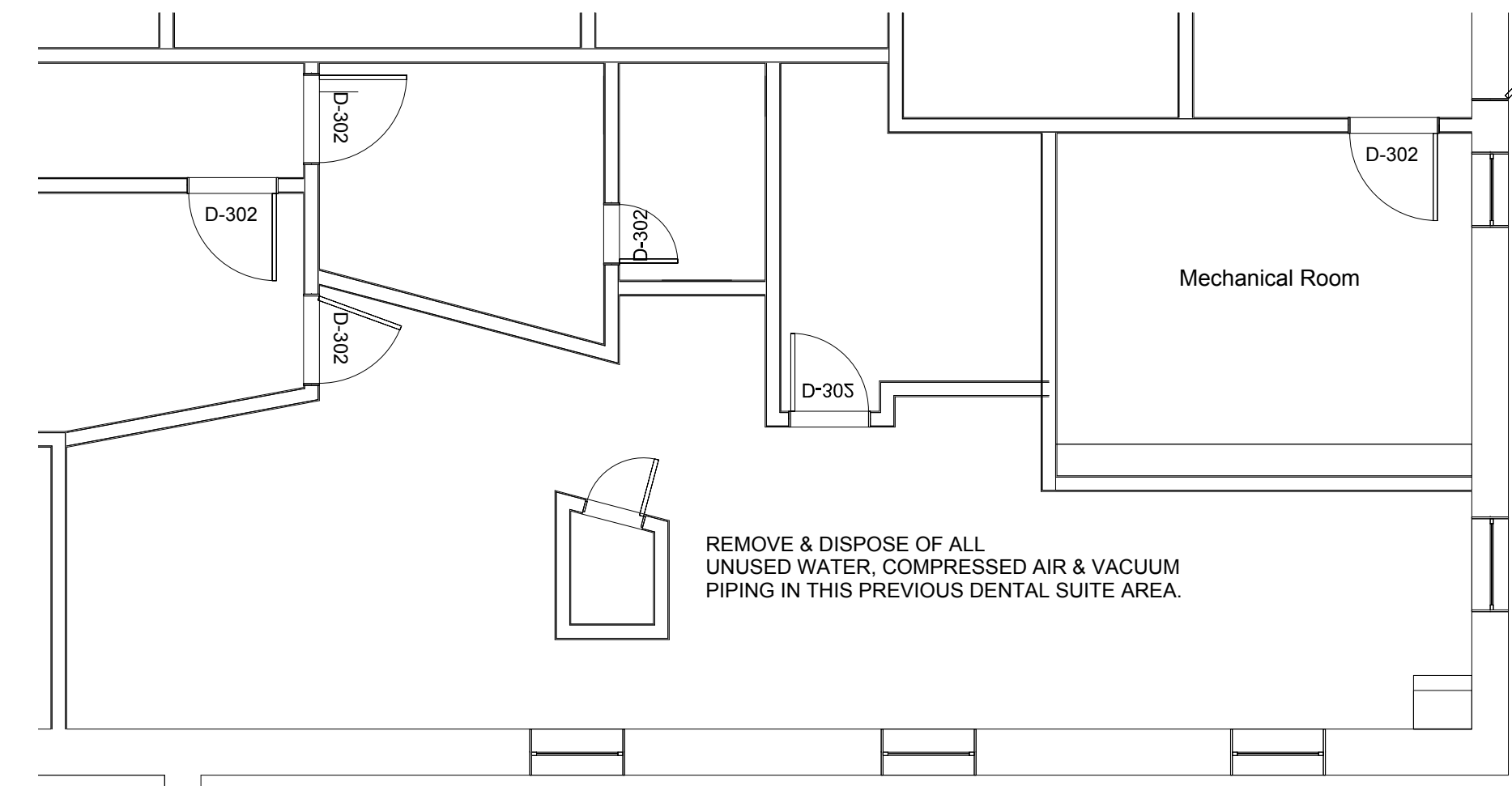
Date 4/19/2019  
Scale: As Noted Project Number: 18545  
Drawing Number CDI Project No: E1923

P1.1



**SECOND FLOOR PLUMBING PLAN**

SCALE: 3/16" = 1'-0"



**SECOND FLOOR DEMOLITION PLANS**

SCALE: 3/16" = 1'-0"

Creamery Building Renovation  
21 Kent Street, Winchester, Virginia, 22601

City of  
Winchester

Architect  
GROVE & DALL'OLIO  
ARCHITECTS  
PLLC  
18 West Boscowen Street  
Winchester, VA 22601

Mech/Elect Engineer  
Comfort Design Inc.  
620 Pennsylvania Avenue  
Winchester, VA 22601  
(540) 665-2846

Structural Engineer  
PAINTER-LEWIS, P.L.C.  
817 Cedar Creek GRADE, Suite 120  
Winchester, Virginia 22601  
(540) 662-5792

Drawing Title  
**PLUMBING  
2ND FLOOR  
PLAN**

Issue/Revision Seal

**BID SET  
NOT FOR  
CONSTRUCTION**

Date 4/19/2019  
Scale: As Noted Project Number: 18545  
Drawing Number CDI Project No: E1923

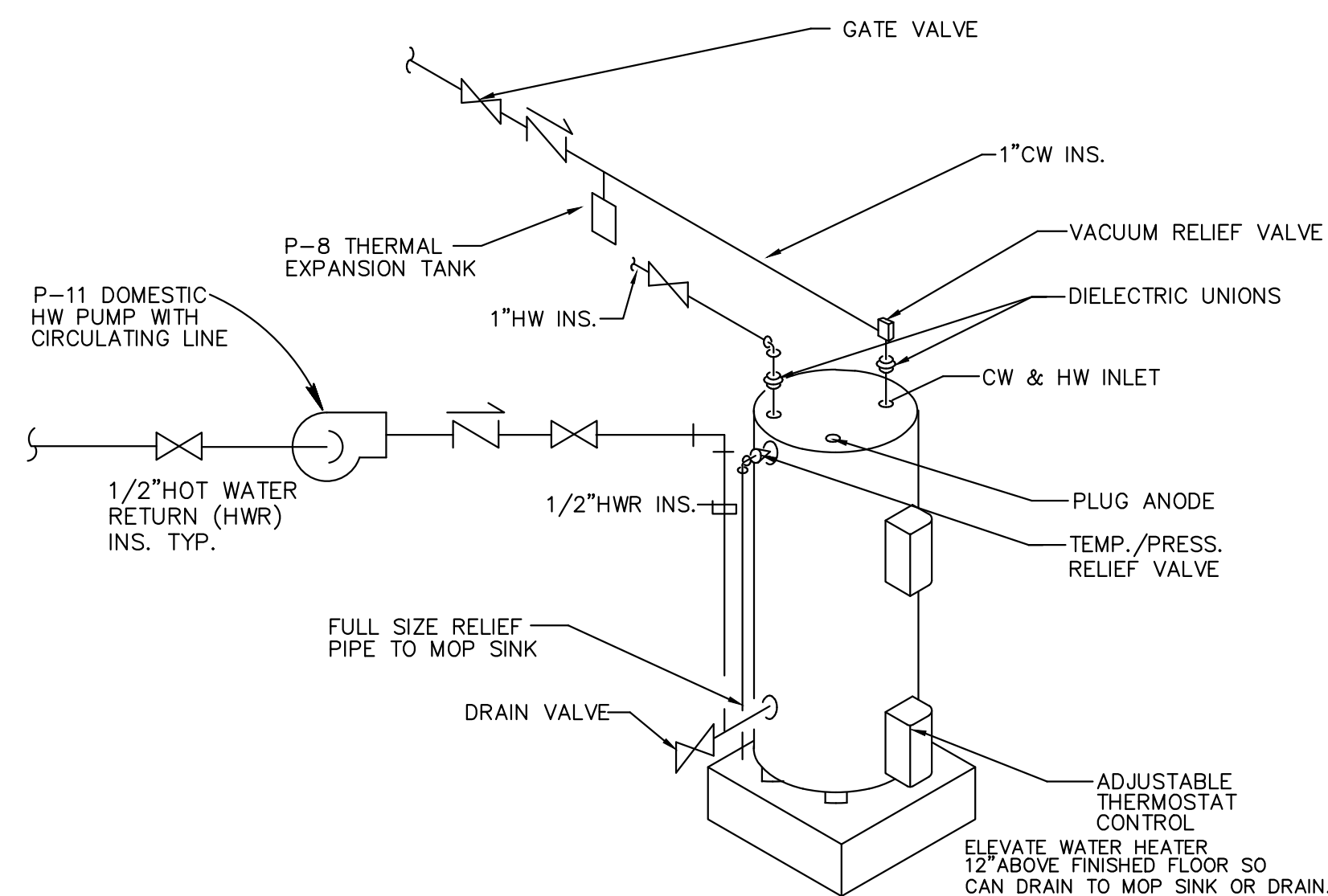
P1.2

# PLUMBING FIXTURE SCHEDULE

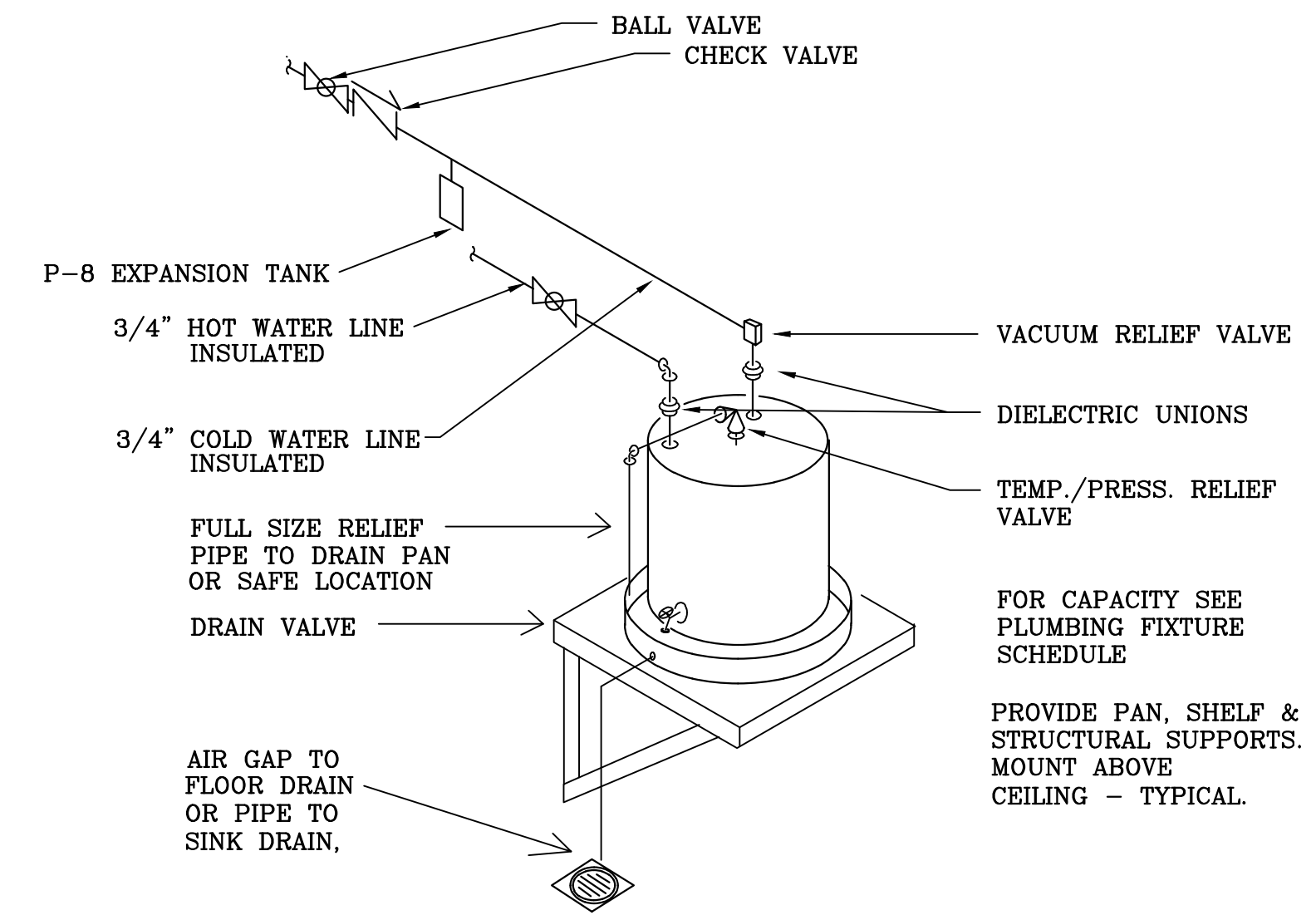
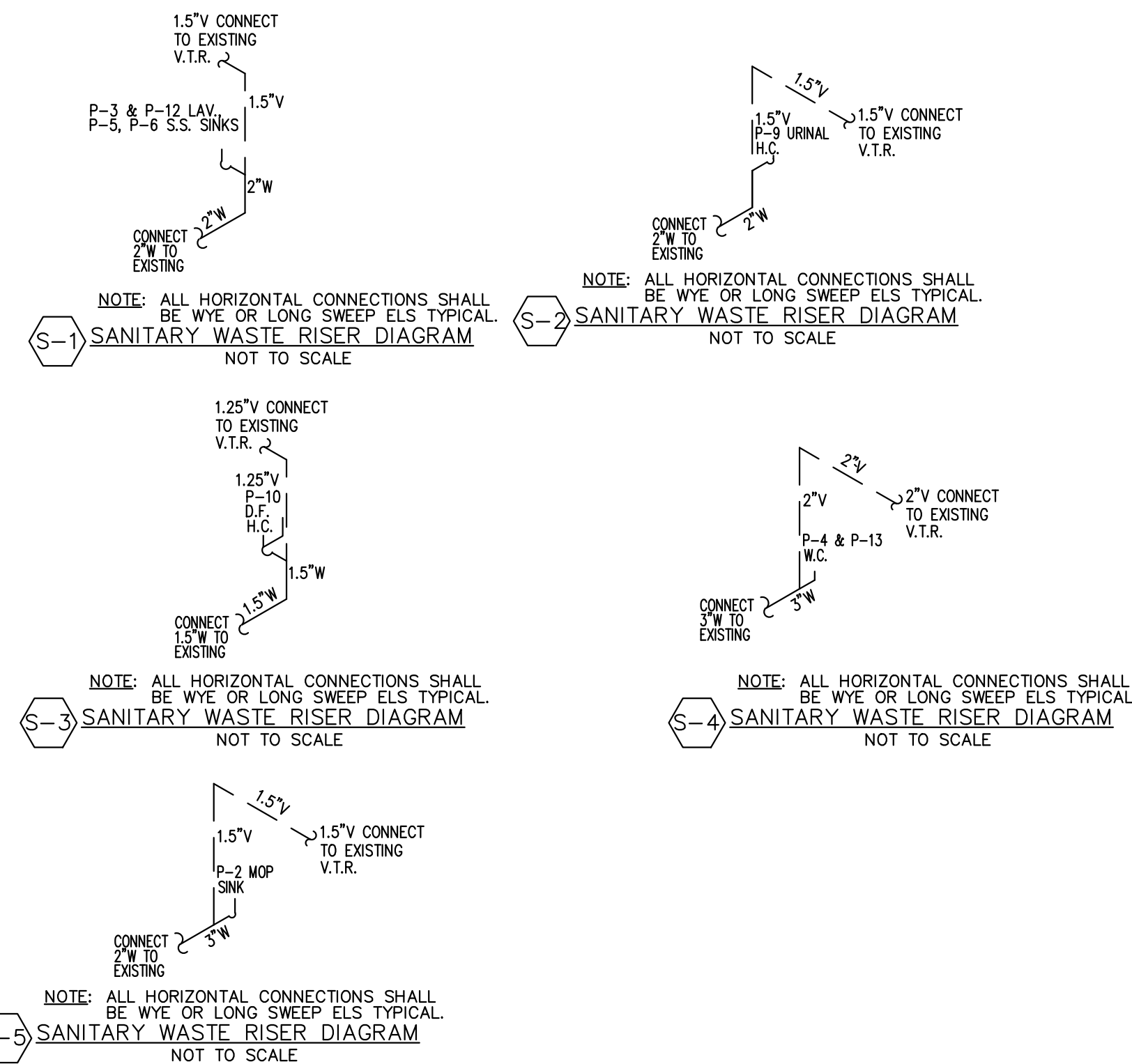
MARK	DESCRIPTION	MINIMUM CONNECTIONS (INCHES)				REMARKS	MANUFACTURER OR EQUAL
		COLD	HOT	WASTE	VENT		
P-1	FLOOR DRAIN W/ TRAP PRIMER	1/2	--	3	1 1/2	IF SPECIFIED/REQUIRED	JOSAM 30003-A-50 FLOOR DRAIN W/ ADJUSTABLE STRAINER AND PPP (PRECISION PLUMBING PRODUCTS) PRIME-RITE TRAP PRIMER VALVE/DISTRIBUTION UNIT. TRAP PRIMER TO BE MOUNTED ABOVE CEILING.
P-2	MOP SERVICE SINK	3/4	3/4	3	1 1/2	W/ VACUUM BREAKER	FIAT/CRANE 24 X 24 BASIN NO. MSB 2424, BASIN STRAINER 1453-BB, AND MOEN 8230 FAUCET W/ VACUUM BREAKER AND MOP HOLDER.
P-3	UNDERMOUNT LAVATORY - HANDICAP	1/2	1/2	1 1/2	1 1/4	HANDICAP - A.D.A.	KOHLER K-20000-0 UNDER-MOUNT SINK, K-11076-4 FAUCET, COUNTER MOUNTED, MCGUIRE 155A GRID STRAINER, P-TRAP, TEMPERING VALVE, AND 2165 LOOSE KEY SUPPLIES. A.D.A. COMPLIANT W/ TRUEBRO LAVGUARD INSULATION.
P-4	WATER CLOSET - HANDICAP	1	--	3	2	HANDICAP - A.D.A.	KOHLER K-4368 FLOOR MOUNTED/OUTLET FLUSH VALVE TOILET W/ K-4670-CA SEAT AND SLOAN 111-1.28 DFB, CHROME FLUSH VALVE (1.28 GPF). A.D.A. COMPLIANT, PROVIDE WATER HAMMER ARRESTOR, PDI TYPE ON COLD WATER LINE.
P-5	S.S. SINGLE BOWL SINK	1/2	1/2	2	1 1/2		ELKAY LRAD1720-65-2, 17" X 20" X 6 1/2", MOEN 8279 2 HANDLE 4" GOOSENECK FAUCET W/ WRISTBLADE HANDLES AND 1.5 GPM FLOW, 2-PIECE BASKET STRAINER, P-TRAP, AND LOOSE KEY SUPPLIES.
P-6	S.S. SINGLE BOWL SINK	1/2	1/2	2	1 1/2		ELKAY LRAD2219-65-3 6 1/2" DEEP SINK, 9799 SANI-STREAM KITCHEN FAUCET, CP 1232SS, 2 PC BASKET STRAINER, FAUCET W/ WRISTBLADE HANDLES AND 1.5 GPM FLOW, P-TRAP, AND CHROME KEY SUPPLIES.
P-7	40 GALLON ELECTRIC WATER HEATER	3/4	3/4	--	--		A.O. SMITH MODEL DSE-40, 40 GALLON, 4.5 KW INPUT DUAL, 208/1/60 W/ T&P RELIEF, ADJUSTABLE TEMPERATURE CONTROL, 18 GPH @ 90 F RISE & DRAIN PAN.
P-8	HOT WATER EXPANSION TANK	3/4	--	--	--		AMTROL MODEL ST-5C, 150 PSIG, 2.0 GALLONS W/ 1.9 GALLON ACCEPTANCE, ASME RATED, MAXIMUM 200 F OPERATING TEMPERATURE AND 150 PSIG WORKING PRESSURE. INSTALL ON COLD WATER LINE.
P-9	URINAL - HANDICAP	3/4	--	2	1 1/2	HANDICAP - A.D.A.	KOHLER URINAL K-4972-ET W/ WALL CARRIER, AND SLOAN 186-0.5 CHROME PLATED, FLUSH VALVE (0.5 GPF). MOUNT AT A.D.A. HEIGHT.
P-10	BI-LEVEL DRINKING FOUNTAIN	1/2	--	1 1/2	1 1/4	HANDICAP - A.D.A.	ELKAY LZWS-EDFP217K W/ STAINLESS STEEL FINISH, BOTTLE FILLING STATION, 115/1/60, 15 WATTS, FILLER SENSOR, HARDWARE, MCGUIRE 8902 P-TRAP, 2165-LK LOOSE KEY SUPPLY. MOUNT HC SPOUT PER A.D.A. REQUIREMENTS.
P-11	HOT WATER CIRCULATOR PUMP	--	3/4	--	--	INTERLOCK TO 7-DAY TIMER	B&G MODEL PL-30B, 2 GPM @ 23 FT HEAD, BRONZE BODY, 1/12 HP, 115/1/60, 175 PSI MAXIMUM WORKING PRESSURE, AND 225 F MAX. OPERATING TEMPERATURE. PROVIDE 7 DAY PROGRAMMABLE TIMER FOR CIRCULATOR PUMP TYPICAL.
P-12	10 GALLON ELECTRIC HOT WATER HEATER	3/4	3/4	--	--		A.O. SMITH MODEL EJC-10, 9 GALLON, 4.5 KW INPUT, 208/1/60 W/ T&P RELIEF, VACUUM RELIEF, ADJUSTABLE TEMPERATURE CONTROL & DRAIN PAN.
P-13	WATER CLOSET STANDARD HEIGHT	1	--	3	2		KOHLER K-96054-SS FLOOR MOUNTED/OUTLET FLUSH VALVE TOILET W/ K-4670-CA SEAT AND SLOAN 111-1.28 DFB, CHROME FLUSH VALVE (1.28 GPF), PROVIDE WATER HAMMER ARRESTOR, PDI TYPE ON COLD WATER LINE.

**PLUMBING NOTES:**

- ALL FIXTURES SHALL BE WHITE UNLESS NOTED OTHERWISE.
- ALL WORK SHALL COMPLY WITH THE 2015 VIRGINIA PLUMBING AND MECHANICAL CODES, NATIONAL ELECTRICAL CODE, AND LOCAL GOVERNING CODES AND PERMITS. CONTRACTOR SHALL OBTAIN ALL PERMITS.
- ALL INTERIOR HOT AND COLD WATER LINES SHALL BE INSULATED MIN. 1" THICK. HOT WATER LINES AND EXPOSED DRAINS SHALL BE INSULATED W/ WHITE PLASTIC JACKET INSULATION TO PREVENT TOUCH BY HANDICAP - TRUEBRO LAV GUARD OR EQUAL. PIPE INSULATION SHALL BE 1" ABOVE CEILING & MINIMUM 1" IN WALLS. ALL ABOVE GRADE WASTE AND ROOF DRAIN PIPING SHALL BE CAST IRON OR INSULATED PVC FOR SOUND. ALL HORIZONTAL ROOF DRAIN PIPING SHALL BE INSULATED. ALL HOT AND COLD WATER PIPING SHALL BE COPPER TYPE "L" OR EQUAL.
- CONTRACTOR SHALL PROVIDE ALL NECESSARY FITTINGS, FIXTURES AND VALVES, TO MAKE AN OPERATING SYSTEM. ALL PIPING SHALL BE RUN INSIDE WALLS OR ABOVE CEILING UNLESS SHOWN OTHERWISE. ALL EXPOSED PIPING TO OCCUPIED AREAS SHALL BE CHROME PLATED. PLUMBER/INSTALLER SHALL ENSURE THAT PIPES ARE ADEQUATELY INSULATED TO PREVENT FREEZING.
- CONTRACTOR SHALL COORDINATE CONNECTION OF WATER AND SEWER SYSTEMS W/ LOCAL UTILITIES PRIOR TO MAKING FINAL CONNECTIONS TO UTILITY MAINS.
- CONTRACTOR SHALL PROVIDE ALL MOUNTING HARDWARE AND ACCESSORIES TO INSTALL ALL FIXTURES. INSTALL HANDICAP FIXTURES IN COMPLIANCE WITH ADA AND LOCAL CODES.
- ALL NECESSARY PUMP CONTROLS, STARTERS, DISCONNECTS SHALL BE PROVIDED.
- ALL PIPE PENETRATIONS THROUGH FIRE RATED WALLS, FLOORS AND CEILINGS SHALL BE SEALED PER CODE WITH A FIRE RATED SEALANT OR ASSEMBLY THAT PROVIDES EQUAL FIRE RATING OF THE WALL, FLOORS, AND CEILINGS.
- COORDINATE WITH MECHANICAL AND ELECTRICAL CONTRACTOR ON INSTALLATION & COORDINATION OF WORK & TRADES.
- FIELD VERIFY SIZE AND MODEL OF BASEMENT SUMP PUMP AND REPLACE WITH NEW SUMP PUMP THAT IS 150% GREATER CAPACITY & INTERLOCK TO EXISTING PUMP CONTROLS. COORDINATE WITH ELECTRICAL ON LARGER SERVICE SIZE TO NEW SUMP PUMP FOR WIRE, CONDUIT AND BREAKER SIZE.

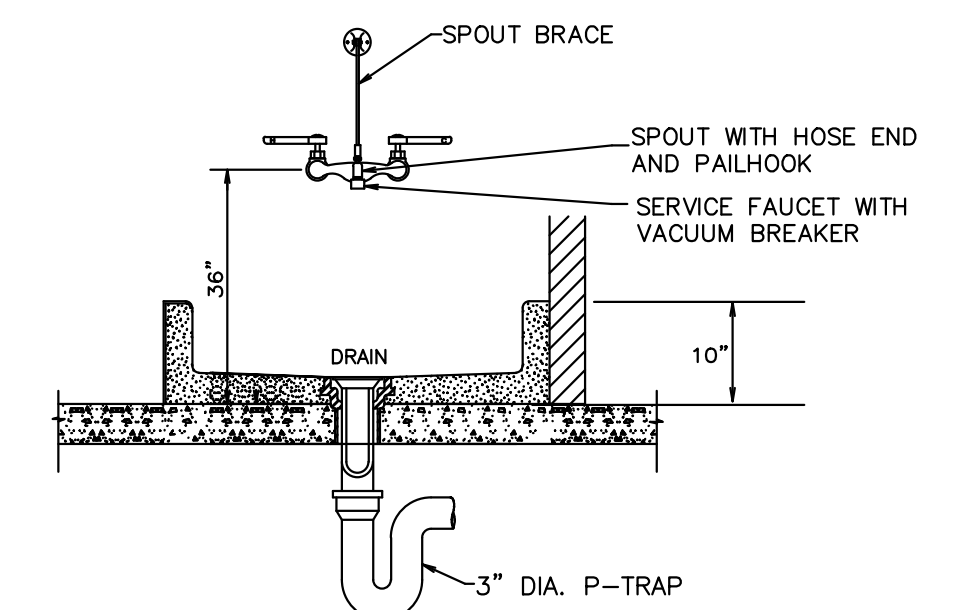


**P-7 WATER HEATER PIPING DETAIL**  
NOT TO SCALE



**P-12 WATER HEATER DETAIL**

N.T.S.



**P-2 MOP SINK DETAIL**  
NOT TO SCALE

**HANDICAP ACCESSIBILITY NOTES:**

- WATER CLOSETS: 17"-19" A.F.F. TO RIM  
16" FROM SIDEWALL TO CENTER (IN PLAN)
- LAVATORIES: 34" MAX. A.F.F. TO TOP OF RIM  
29" MIN. CLEAR A.F.F. @ APRON  
17" MIN. PROJECTION  
30" CLEAR CENTERED (IN PLAN)
- WATER COOLERS: 36" MAX. A.F.F.  
27" MIN. CLEAR A.F.F. @ APRON  
17"-19" PROJECTION
- URINALS: 17" MAX. A.F.F. TO TOP OF ELONGATED RIM.

Creamery Building Renovation  
21 Kent Street, Winchester, Virginia, 22601

City of  
Winchester

Architect  
**GROVE & DALL'OLIO**  
ARCHITECTS  
PLLC  
18 West Boscawen Street  
Winchester, VA 22601

Mech/Elect Engineer  
Comfort Design Inc.  
620 Pennsylvania Avenue  
Winchester, VA 22601  
(540) 665-2846

Structural Engineer  
PAINTER-LEWIS, P.L.C.  
817 Cedar Creek GRADE, Suite 120  
Winchester, Virginia 22601  
(540) 662-5792

Drawing Title  
**PLUMBING  
RISERS &  
DETAILS**

Issue/Revision Seal

**BID SET  
NOT FOR  
CONSTRUCTION**

Date: 4/19/2019  
Scale: As Noted Project Number: 18545  
Drawing Number: CDI Project No: E1923

**P1.3**